

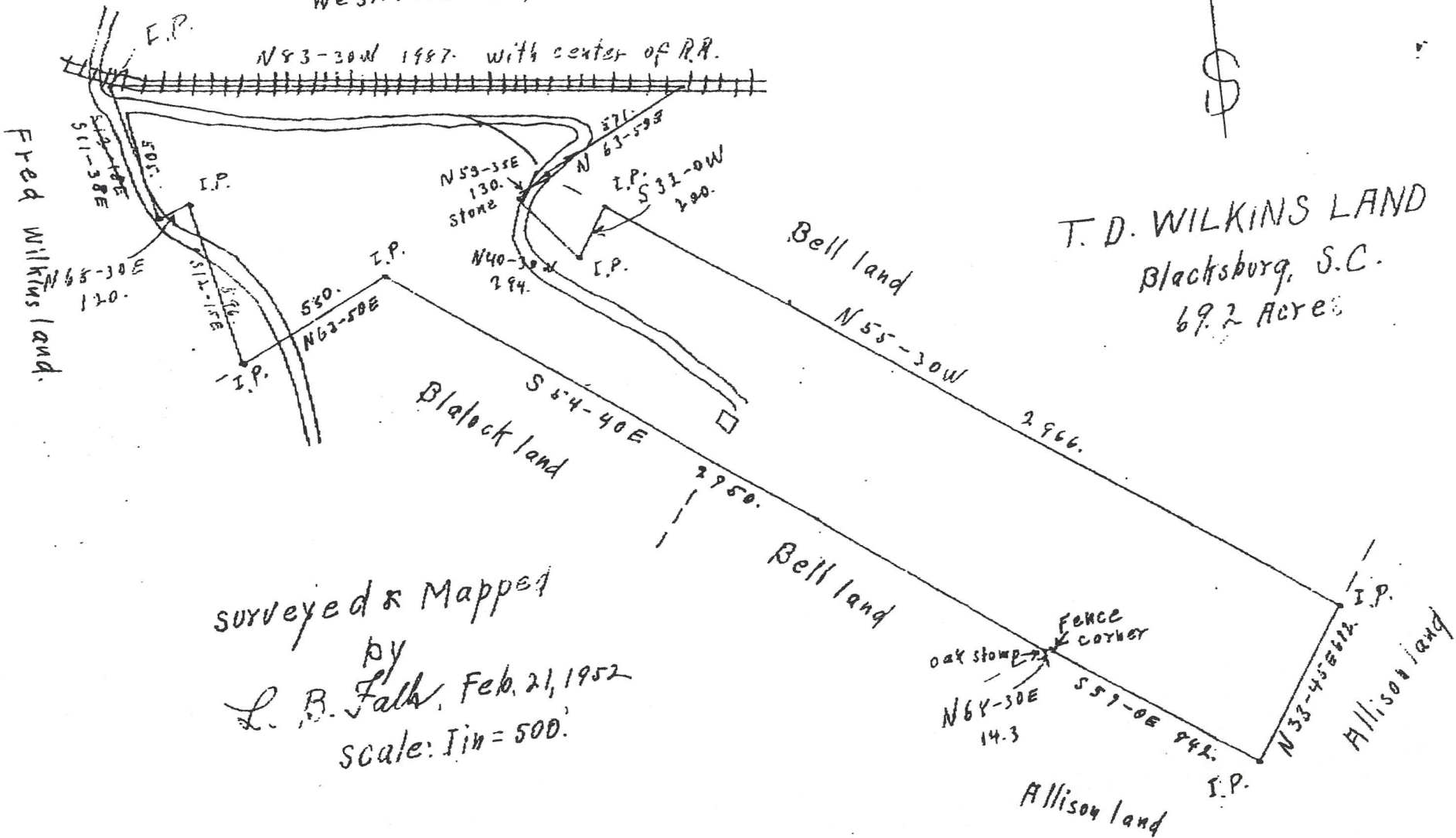
19840316



0000003330

Westbrook land

N 83-30W 1987. with center of R.R.



T. D. WILKINS LAND  
Blacksburg, S.C.  
69.2 Acres

surveyed & Mapped  
by  
L. B. Falk, Feb. 21, 1952  
scale: 1 in = 500'

ASSESSOR OFFICE

PAGE 02